

Respiratory Viruses in Luxembourg (ReViLux)

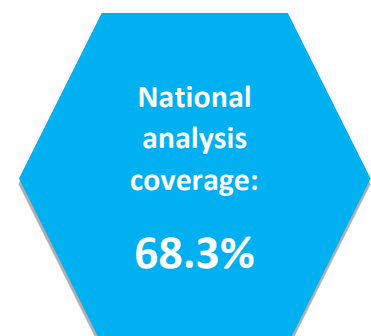
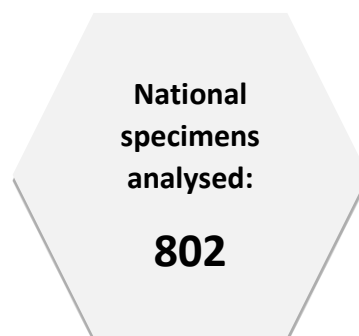
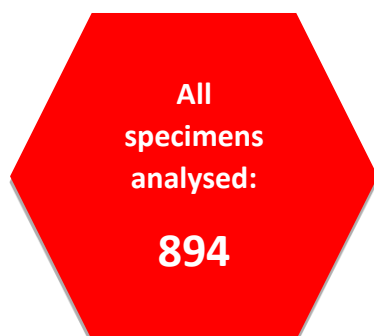
Weekly report (23 – 29 May 2022)

Executive summary

The sentinel network reported 3.1% consultations for influenza-like illness, thus exceeding the baseline circulation threshold, according to the European Center for Disease Prevention and Control (ECDC). Within the specimens collected by the sentinel network, SARS-CoV-2 was the most frequently detected virus over the last four weeks (30.4%), followed by Human rhinovirus (27.8%) and Influenzavirus A (19%).

Regarding the SARS-CoV-2 genomic surveillance, LNS sequenced 545 specimens from residents in Luxembourg in week 21 (of 1174 total cases in the Grand Duchy of Luxembourg; 46.4%). This meets the ECDC recommendations to detect emerging variants. Including PCR screening results, 802 national specimens were analysed globally (68.3%).

The Omicron variant remains the dominant one in the representative sample. The Omicron BA.2 lineage is the most frequent one (70.3%), followed by Omicron BA.5 (25.4%).



Introduction

The Laboratoire national de santé, as **National Reference Laboratory for Acute Respiratory Infections in Luxembourg**, performs close surveillance on respiratory viruses, with a special focus on SARS-CoV-2. There are currently two active projects:

- **The Sentinel Surveillance Network.** It provides a broad picture of respiratory diseases affecting the Luxembourgish population, based on its double monitoring system (syndromic and virological).
- **The National SARS-CoV-2 Genomic Surveillance Program.** It enables detailed observation of SARS-CoV-2 mutations and variants through time and space, and also monitoring specific groups of interest.

The objective of the ReViLux is to inform public health actions in Luxembourg.

Sentinel Surveillance Network

The **Sentinel Surveillance Network** aims at monitoring the circulating respiratory viruses, including SARS-CoV-2, and hence underpin public health actions. Following the World Health Organization (WHO) and European Centre for Disease Prevention and Control (ECDC) guidance, it focuses on cases of acute respiratory infection (ARI) and influenza-like illness (ILI).

The current influenza season started in week 40/2021, and the history of ILI consultations is displayed in Figure 1. A detailed summary of the number of ARI and ILI cases during the last four weeks is included in Table 1. In the week of study, 3.1% of consultations were reported as ILI, thus exceeding the threshold for baseline circulation, according to ECDC (2.59%).

Table 1. Syndromic surveillance over the last 4 weeks

Week	ARI		ILI		Total consultations
	N	%	N	%	
2022/18	42	11.14	17	4.51	377
2022/19	29	13.12	13	5.88	221
2022/20	60	15.87	14	3.70	378
2022/21	25	15.62	5	3.12	160

ARI: Acute Respiratory Infections; ILI: Influenza-Like Illness.

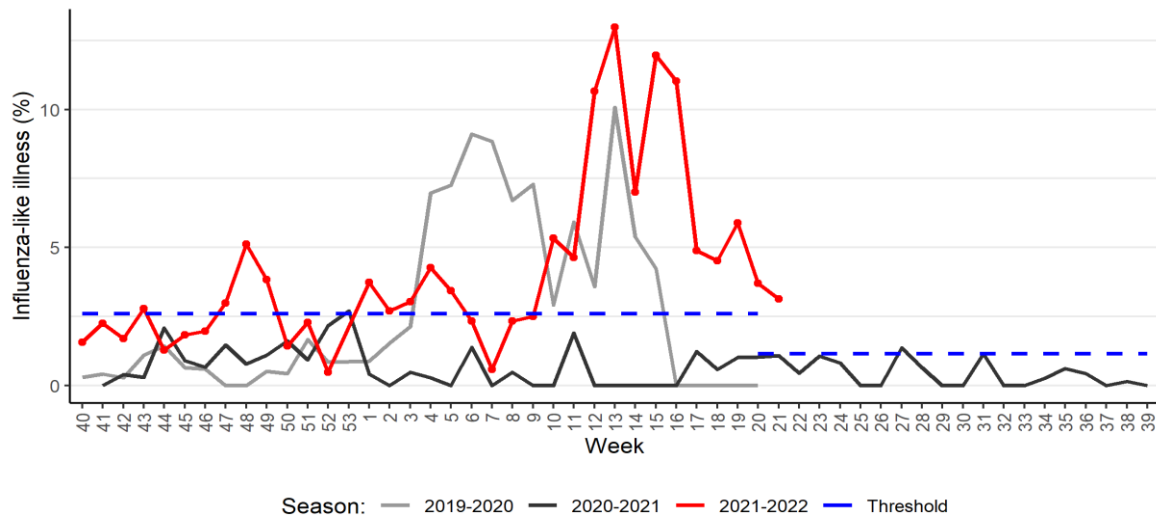


Figure 1. Percentage of patients with influenza-like illness over the last three seasons

Additionally, a selection of sentinel cases is further studied in order to monitor the circulation of respiratory viruses in the country, as shown in Figure 2. Over the last 4 weeks, the positivity rate was at 60.6%, and the most frequently detected viruses were SARS-CoV-2 (30.4%), Human rhinovirus (27.8%) and Influenzavirus A (19%). Co-infections were detected in 6 specimens, including 2 involving SARS-CoV-2 and 1 involving influenza A. These results are displayed more in detail in Table 2.

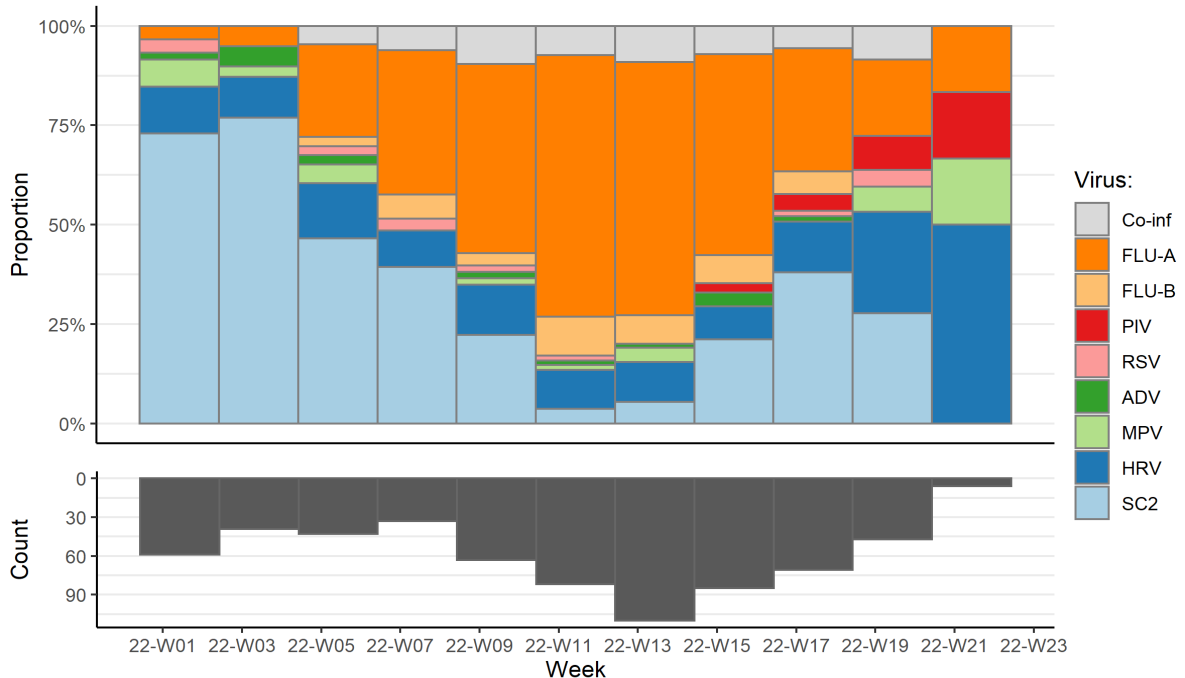


Figure 2. Distribution of respiratory viruses detected within the Sentinel Network, by two-week periods. Results from last weeks are not yet consolidated.

Co-inf: co-infection; FLU-A: influenza A; FLU-B: influenza B; PIV: parainfluenza virus; RSV: respiratory syncytial virus; ADV: adenovirus; MPV: metapneumovirus; HRV: human rhinovirus; SC2: SARS-CoV-2.

Table 2. Distribution of respiratory viruses detected within the Sentinel Network over the last 4 weeks and during the current season.

Virus	Last 4 weeks		Current season	
	N*	%	N*	%
SARS-CoV-2	24	30.4	331	35.2
Influenzavirus A	15	19.0	283	30.1
Human rhinovirus	22	27.8	179	19.0
Influenzavirus B	1	1.3	34	3.6
Metapneumovirus	5	6.3	33	3.5
Parainfluenzavirus	7	8.9	31	3.3
Adenovirus	3	3.8	25	2.7
Respiratory syncytial virus	2	2.5	24	2.6
Total	79	100.0	940	100.0

Co-infection cases counted once for each virus detected.

SARS-CoV-2 Genomic Surveillance

The current sequencing strategy

The National Reference Laboratory for Acute Respiratory Infections at LNS receives SARS-CoV-2 positive samples (nasopharyngeal or oropharyngeal swabs analysed by RT-PCR) from the national network of laboratories and proceeds as follows:

1. Sequencing a representative sample of specimens.
2. Sequencing specimens from target groups (i.e. hospital cases and post-vaccination cases).
3. Sequencing specimens from clusters with high transmission.

The representative sample of specimens is a systematic selection from all SARS-CoV-2 positive cases registered in Luxembourg to detect emerging variants and early increases in their incidence and transmission within the community in Luxembourg. This sample is selected according to the ECDC guidelines.

Since the emergence of the Omicron variant of concern, and given the high incidence rates in the European context, targeted PCR tests are carried systematically in order to get an earlier interim evaluation of the variants in circulation. The PCR kits currently used target the following spike mutations: 69/70del, K417N, N501Y.

SARS-CoV-2 lineages have been assigned based on Rambaut et al. using the Phylogenetic Assignment of Named Global Outbreak LINEages (pangolin) software (4.0.6, designation v1.8). The Pango nomenclature is used in addition to the WHO nomenclature to enable easier visualization of links between any evolving variants and their ancestor.

Screening and sequenced specimens

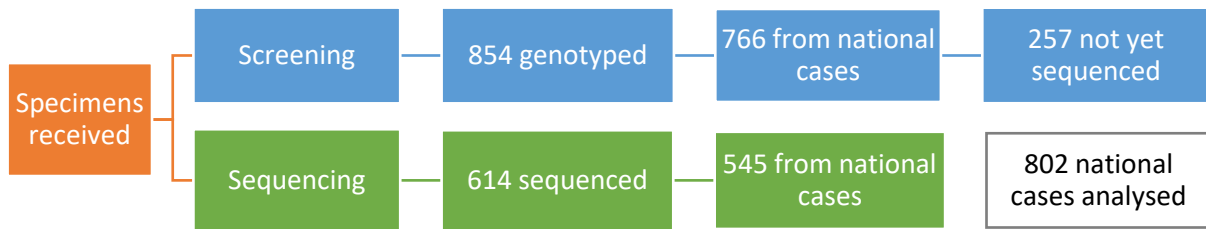


Figure 3. Flowchart of specimens collected during week 21/2022

In week 21, 1174 new cases were registered in Luxembourg; hence, the minimum sample size required to detect emerging variants at a 2.5% incidence is estimated to be 397 specimens (33.8%).

As shown in Figure 3, of all specimens received from the week of study, 854 were screened by targeted PCR for the Omicron variant (including 766 national specimens), in order to enable an earlier detection of potential Omicron cases (see results in the following section). In parallel, the microbial genomics unit at the LNS sequenced 614 specimens, including 545 national ones. The weekly sequencing coverage remains at 46.4% (out of 1174 cases registered in Luxembourg; see coverage trend in Figure 4), which exceeds the recommended sample size. Overall, 802 national specimens were analysed either by sequencing or screening (68.3%).

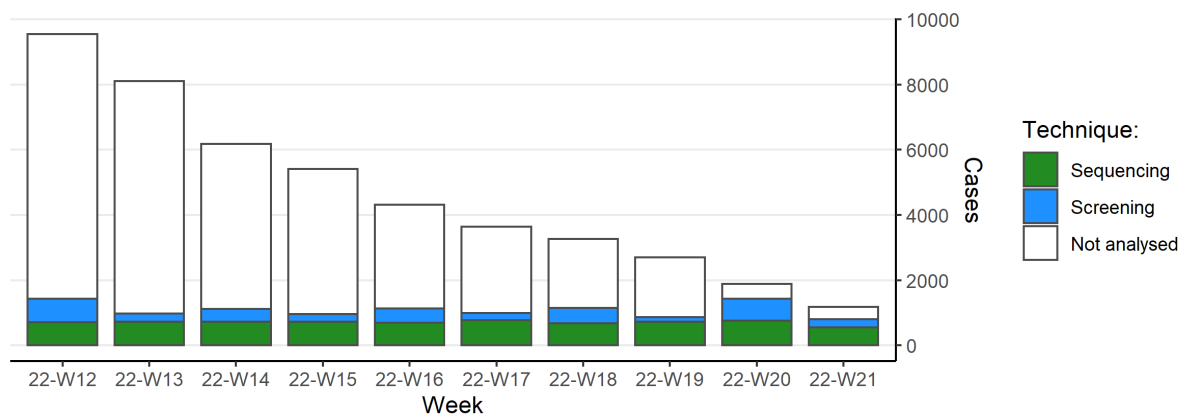


Figure 4. National coverage based on weekly number of positive cases in Luxembourg. The coverage from the latest weeks might not be consolidated yet.

Screening results

As shown in Figure 5, the PCR screening suggests that the proportion of Omicron lineages carrying the H69/70 deletion (i.e. BA.4 and BA.5) will continue to increase (45.5% estimated for week 22, CI95%: 39.58 - 51.1%).

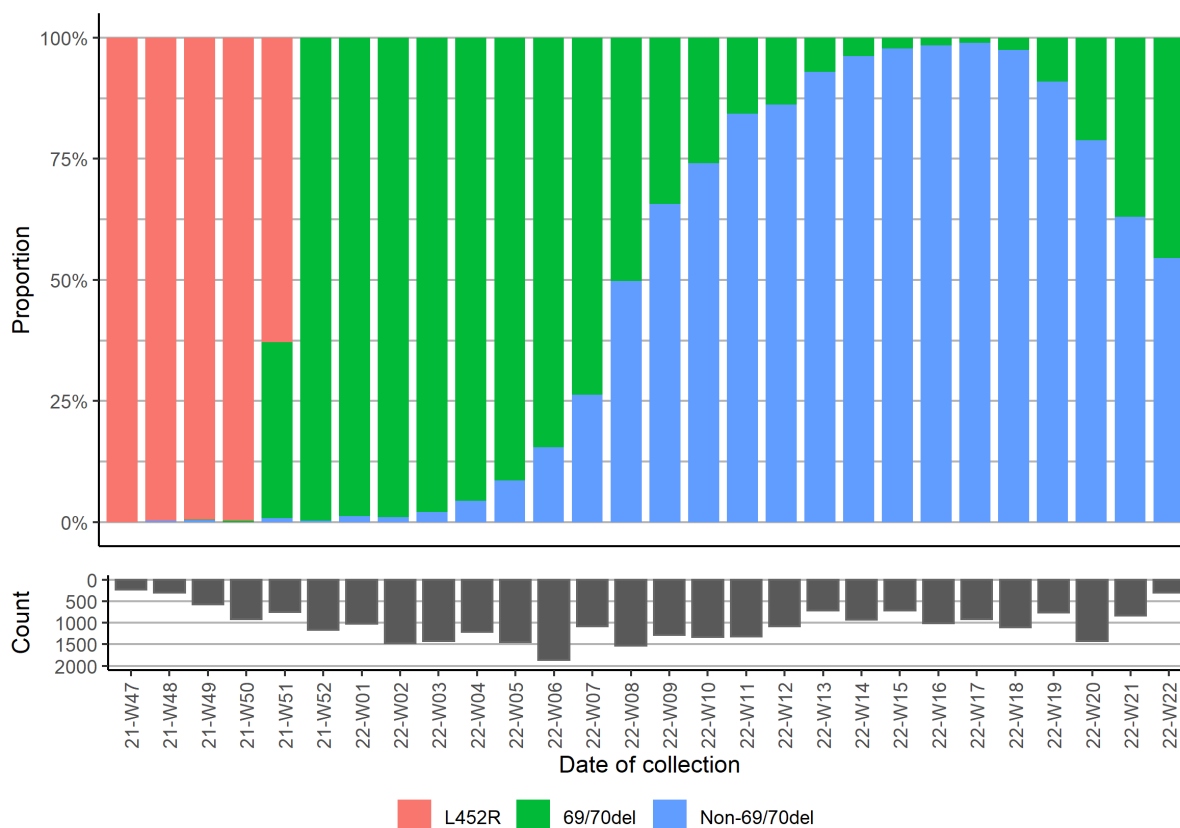


Figure 5. Distribution of specimens included in the screening for the Omicron variant by date of collection. Results more recent than the week of study are not yet consolidated.

Circulating lineages detection

The distribution of successfully assigned lineages within the national selection is shown in Figure 6, and it is further detailed in Table 4 (last two weeks). A summary of the VOCs assigned among all specimens sequenced (including non-residents) during the last two weeks and since the beginning of the sequencing activity is shown in Table 5. Breakdown of lineages under monitoring is also included.

The Omicron variant remains the dominant one within the representative sample, the most frequent lineage being Omicron BA.2 (70.3%), followed by Omicron BA.5 (25.4%).

Table 4. Distribution of SARS-CoV-2 lineages detected within the representative sample during the last two weeks. Previously reported cases might be updated by retrospective analysis.

Lineage	Previous week			Current week		
	N	%	CI %	N	%	CI %
Omicron BA.2	400	87.9	84.9 - 90.9	279	70.3	65.8 - 74.8
Omicron BA.5	38	8.4	5.8 - 10.9	101	25.4	21.2 - 29.7
Omicron BA.4	16	3.5	1.8 - 5.2	16	4.0	2.1 - 6.0
Omicron BA.1	0	0.0	-	1	0.3	0.0 - 0.7
Others	1	0.2	0.0 - 0.7	0	0.0	-
Total	455	100.0	-	397	100.0	-

CI: Confidence Interval at 95%.

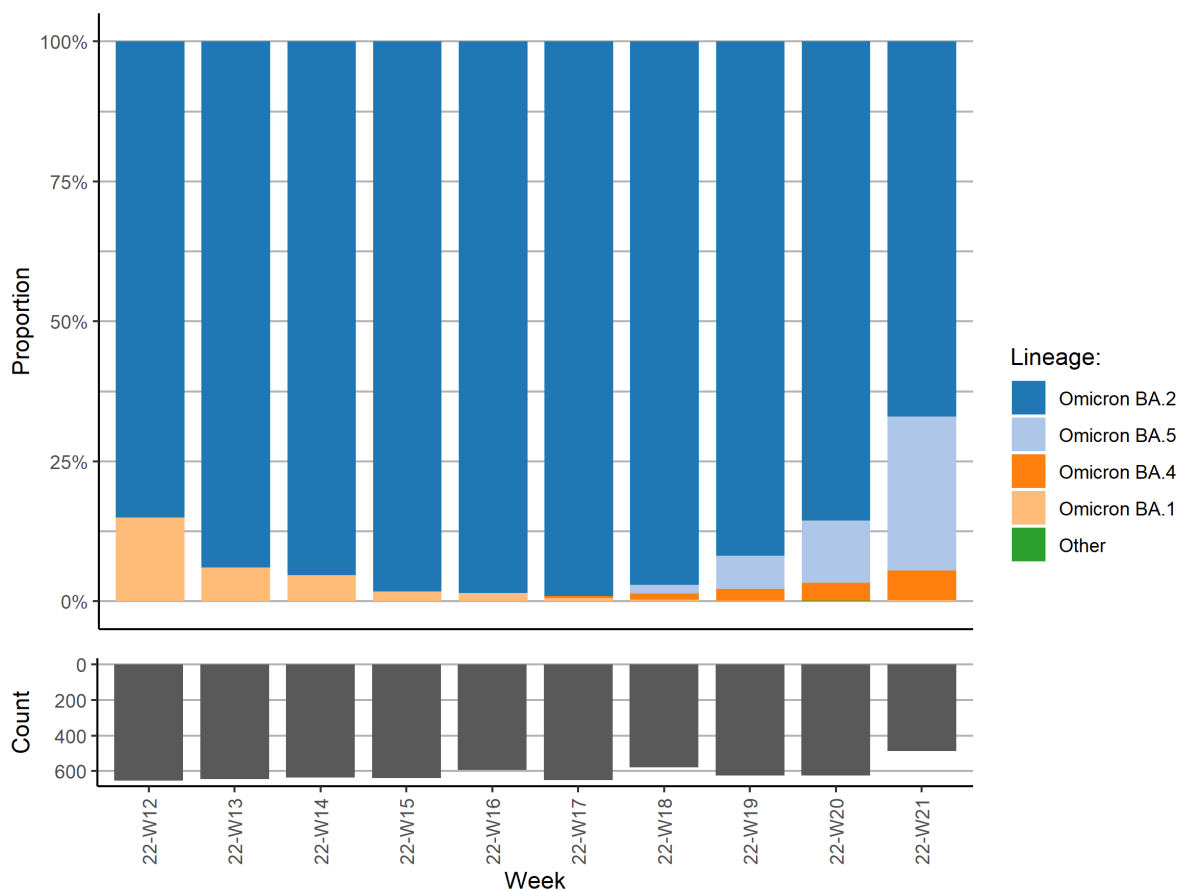


Figure 6. Distribution of lineages within the representative sample during the last 10 weeks.

Table 5. Distribution SARS-CoV-2 variants of concern and lineages under monitoring detected within all samples sequenced since the beginning of the pandemic.

Variant	Previous week		Current week		Cumulative count
	N	%	N	%	
Omicron	655	99.8	541	100	16 388
BA.2.9	54	8.2	42	7.8	836
BA.5	72	11	139	25.7	259
BA.4	21	3.2	32	5.9	75
BA.2.12.1	10	1.5	22	4.1	44
BA.2.13	4	0.6	5	0.9	25
BA.2.11	0	0.0	0	0	2
Delta	0	0.0	0	0	13 678
Others	1	0.2	0	0	15 006
Total	656	100.0	541	100	45 072

Clinical and epidemiological factors

In this section, the lineage distribution of all specimens sequenced over the last month is assessed by demographics (sex and age group, Figure 7), sampling setting (community vs. hospital, Table 6) and vaccination status (not vaccinated vs. fully vaccinated, Table 7).

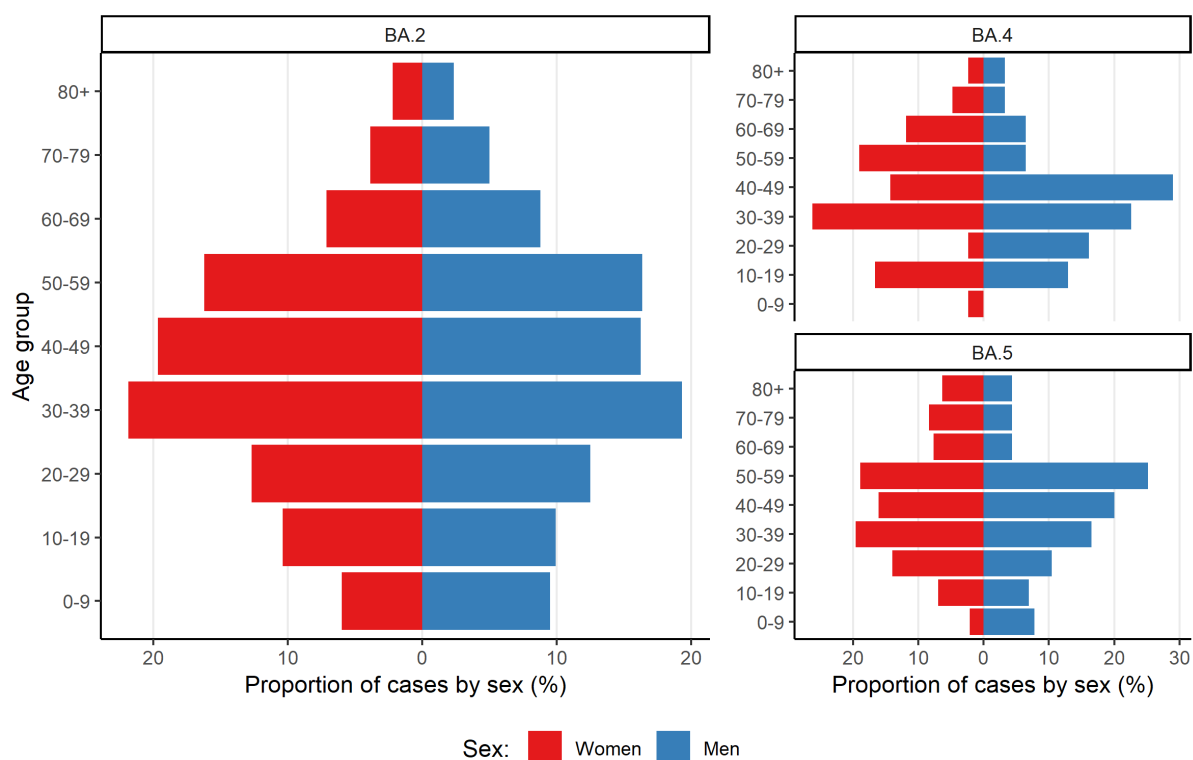


Figure 7. Age group and sex distribution of specimens sequenced over the last 4 weeks, by lineage.

Table 6. Comparison of lineage distribution by sampling setting.

Lineage	Community			Hospital		
	Women	Men	Total	Women	Men	Total
Omicron BA.2	83.8%	84.1%	83.9%	76.6%	87.4%	81.5%
Omicron BA.5	12.2%	12.4%	12.3%	21.0%	10.7%	16.3%
Omicron BA.4	4.1%	3.5%	3.8%	2.4%	1.9%	2.2%
Total	100.0%	100.0%	100.0%	100.0%	100.0%	100.0%

Table 7. Comparison of lineage distribution by vaccination status.

Lineage	Not vaccinated			Fully vaccinated		
	Women	Men	Total	Women	Men	Total
Omicron BA.2	83.9%	84.8%	84.3%	81.8%	83.0%	82.3%
Omicron BA.5	11.2%	13.5%	12.3%	15.2%	13.3%	14.3%
Omicron BA.4	5.0%	1.8%	3.3%	3.1%	3.7%	3.3%
Total	100.0%	100.0%	100.0%	100.0%	100.0%	100.0%

Mutation surveillance

In addition to the surveillance of SARS-CoV-2 variants, the LNS monitors the occurrence of SARS-CoV-2 mutations reported to have a clinical and epidemiological relevance. Newly acquired mutations may occur and their early detection might be key to expect changes in the epidemic evolution. Following ECDC guidance, the LNS is currently monitoring a selection of mutations to the spike protein frequently associated to VOCs. As each VOC is characterised by a set of defining mutations, which are expected to be highly present, it is interesting to analyse the non-defining ones. Among the specimens collected over the last four weeks, the following mutations were detected:

- L452Q in at least 2.26% BA.2 specimens, similar to the rest of Europe (2.3%, according to GISAID).
- 69/70del in at least 1.94% specimens, slightly higher than the rest of Europe (1.5%, according to GISAID)

References

Centers for Disease Control and Prevention. SARS-CoV-2 Variant Classifications and Definitions. Retrieved 07 June 2022, from <https://www.cdc.gov/coronavirus/2019-ncov/variants/variant-info.html>

COVID-19 Data Portal - accelerating scientific research through data. (2021). Retrieved 07 June 2022, from <https://www.covid19dataportal.org/sequences>

Direção-Geral da Saúde. Relatório de Situação. Retrieved 07 June 2022, from <https://covid19.min-saude.pt/relatorio-de-situacao/>

European Centre for Disease Prevention and Control. Guidance for representative and targeted genomic SARS-CoV-2 monitoring – 3 May 2021. ECDC : Stockholm ; 2021

European Centre for Disease Prevention and Control. SARS-CoV-2 variants of concern. Retrieved 07 June 2022, from <https://www.ecdc.europa.eu/en/covid-19/variants-concern>

Genomic sequencing of SARS-CoV-2: a guide to implementation for maximum impact on public health. Geneva: World Health Organization; 2021.

GISAID. EpiCoV – Pandemic coronavirus causing COVID-19. Retrieved 5 mai 2022, from <https://www.gisaid.org>

GitHub - cov-lineages/pangolin: Software package for assigning SARS-CoV-2 genome sequences to global lineages. (2021). Retrieved 07 June 2022, from <https://github.com/cov-lineages/pangolin>

Hadfield J., Megill C., Bell S., Huddleston J., Potter B., Callender C. et al. (2018). Nextstrain: real-time tracking of pathogen evolution. *Bioinformatics*, 34(23), 4121-4123. doi: 10.1093/bioinformatics/bty407

Instituto Nacional de Saúde Doutor Ricardo Jorge. Diversidade genética do novo coronavírus SARS-CoV-2 (COVID-19) em Portugal. Retrieved 07 June 2022, from <https://insaflu.insa.pt/covid19/>

Pango Network. New AY lineages. Retrieved 07 June 2022, from: <https://www.pango.network/new-ay-lineages-and-an-update-to-ay-4-ay-12/>

Rambaut A., Holmes E., O’Toole Á., Hill V., McCrone J., Ruis C. et al. (2020). A dynamic nomenclature proposal for SARS-CoV-2 lineages to assist genomic epidemiology. *Nature Microbiology*, 5(11), 1403-1407. doi: 10.1038/s41564-020-0770-5

Robert Koch Institut. Aktueller Lage-/Situationsbericht des RKI zu COVID-19. Retrieved 07 June 2022, from https://www.rki.de/DE/Content/InfAZ/N/Neuartiges_Coronavirus/Situationsberichte/Gesamt.html;jsessionid=69BC18053F9591C56EB148E463103DB7.internet101

Santé publique France. Coronavirus : chiffres clés et évolution de la COVID-19 en France et dans le Monde. Retrieved 07 June 2022, from <https://www.santepubliquefrance.fr/dossiers/coronavirus-covid-19/coronavirus-chiffres-cles-et-evolution-de-la-covid-19-en-france-et-dans-le-monde>

Santé publique France. Enquêtes Flash : évaluation de la circulation des variants du SARS-CoV-2 en France. Retrieved 07 June 2022, from <https://www.santepubliquefrance.fr/etudes-et-enquetes/enquetes-flash-evaluation-de-la-circulation-des-variants-du-sars-cov-2-en-france>

Sciensano. COVID-19 – Bulletin épidémiologique hebdomadaire. Retrieved 07 June 2022, from <https://covid-19.sciensano.be/fr/covid-19-situation-epidemiologique>

The Luxembourgish data platform. COVID-19: Rapports hebdomadaires. Retrieved 07 June 2022, from <https://data.public.lu/en/datasets/covid-19-rapports-hebdomadaires/>