

Respiratory Viruses in Luxembourg (ReViLux)

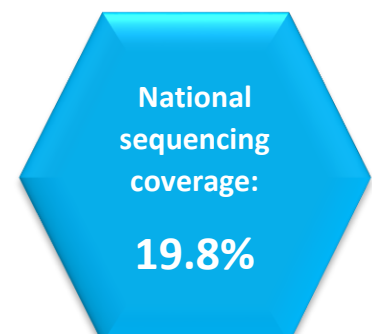
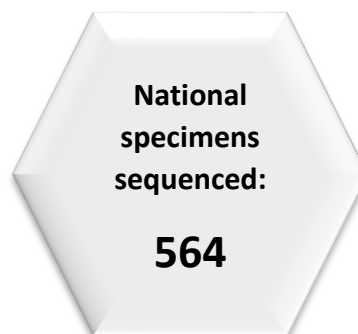
Weekly report (10 – 16 October 2022)

Executive summary

The sentinel network reported 3.8% consultations for influenza-like illness, thus exceeding the baseline circulation threshold, according to the European Centre for Disease Prevention and Control (ECDC). Within the specimens collected by the sentinel network, Human rhinovirus was the most frequently detected virus over the last four weeks (62.7%), followed by Parainfluenzavirus (11.8%) and Adenovirus (7.8%).

Regarding the SARS-CoV-2 genomic surveillance, LNS sequenced 564 specimens from residents in Luxembourg in week 41 (of 2855 total cases in the Grand Duchy of Luxembourg; 19.8%). This reaches the ECDC recommendations to detect emerging variants.

The Omicron variant remains the main one detected in the representative sample. The Omicron BA.5 lineage is the most frequent one (79.2%, confidence interval: 75.7 - 82.8%), followed by Omicron BA.4 (10.1%, confidence interval: 7.4 - 12.7%) and BQ.1 (9.9%, confidence interval: 7.3 - 12.5%).



Introduction

The Laboratoire national de santé, as **National Reference Laboratory for Acute Respiratory Infections in Luxembourg**, performs close surveillance on respiratory viruses, with a special focus on SARS-CoV-2. There are currently two active projects:

- **The Sentinel Surveillance Network.** It provides a broad picture of respiratory diseases affecting the Luxembourgish population, based on its double monitoring system (syndromic and virological).
- **The National SARS-CoV-2 Genomic Surveillance Program.** It enables detailed observation of SARS-CoV-2 mutations and variants through time and space, and also monitoring specific groups of interest.

The objective of the ReViLux is to inform public health actions in Luxembourg.

Sentinel Surveillance Network

The **Sentinel Surveillance Network** aims at monitoring the circulating respiratory viruses, including SARS-CoV-2, and hence underpin public health actions. Following the World Health Organization (WHO) and European Centre for Disease Prevention and Control (ECDC) guidance, it focuses on cases of acute respiratory infection (ARI) and influenza-like illness (ILI).

The season 2022/2023 started in week 40. The history of ILI consultations is displayed in Figure 1, and a detailed summary of the number of ARI and ILI cases during the last four weeks is included in Table 1. In the week of study, 3.8% of consultations were reported as ILI, thus exceeding the threshold for baseline circulation during the interseason, according to ECDC (2.19%).

Table 1. Syndromic surveillance over the last 4 weeks

Week	ARI		ILI		Total consultations
	N	%	N	%	
2022/38	26	11.16	10	4.29	233
2022/39	66	15.31	10	2.32	431
2022/40	106	25.00	17	4.01	424
2022/41	79	15.80	19	3.80	500

ARI: Acute Respiratory Infections; ILI: Influenza-Like Illness.

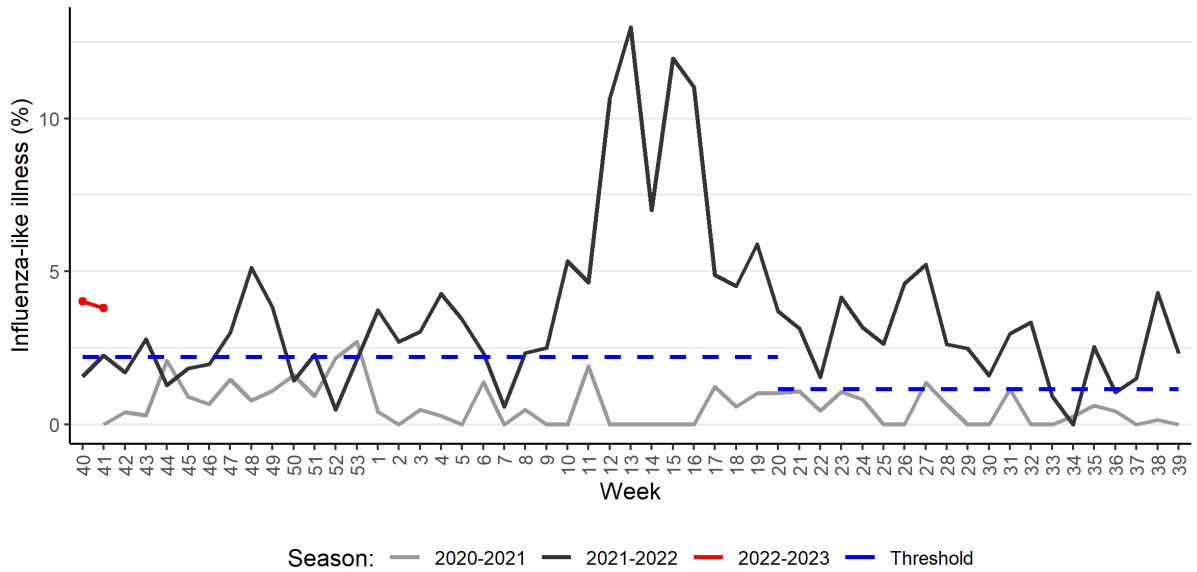


Figure 1. Percentage of patients with influenza-like illness over the last three seasons

Additionally, a selection of sentinel cases is further studied in order to monitor the circulation of respiratory viruses in the country, as shown in Figure 2. Over the last 4 weeks, the positivity rate was at 61.6%, and the most frequently detected viruses were Human rhinovirus (62.7%), Parainfluenzavirus (11.8%) and Adenovirus (7.8%). Co-infections were detected in 4 specimens, 2 involving influenza virus A. These results are displayed more in detail in Table 2.

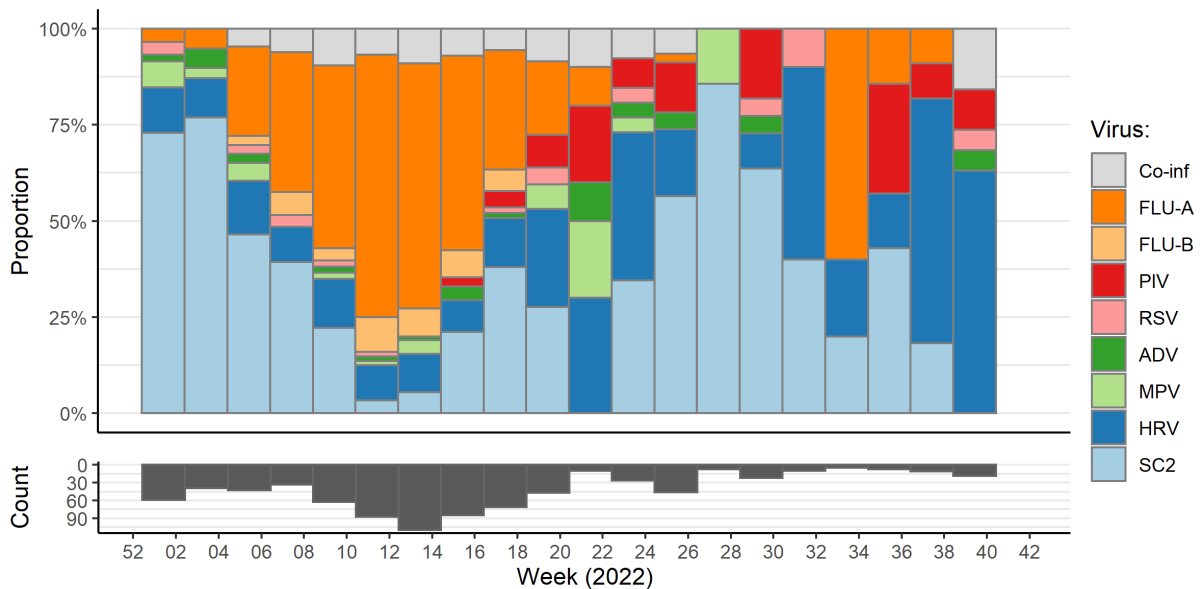


Figure 2. Distribution of respiratory viruses detected within the Sentinel Network, by two-week periods. Results from last weeks are not yet consolidated.

Co-inf: co-infection; FLU-A: influenza virus A; FLU-B: influenza virus B; PIV: parainfluenzavirus; RSV: respiratory syncytial virus; ADV: adenovirus; MPV: metapneumovirus; HRV: human rhinovirus; SC2: SARS-CoV-2.

Table 2. Distribution of respiratory viruses detected within the Sentinel Network over the last 4 weeks and during the interseason period.

Virus	Last 4 weeks		Interseason	
	N*	%	N*	%
SARS-CoV-2	2	3.9	69	43.7
Human rhinovirus	32	62.7	48	30.4
Parainfluenzavirus	6	11.8	17	10.8
Adenovirus	4	7.8	8	5.1
Influenzavirus A	4	7.8	7	4.4
Respiratory syncytial virus	2	3.9	6	3.8
Metapneumovirus	1	2.0	3	1.9
Influenzavirus B	0	0.0	0	0.0
Total	51	100.0	158	100.0

Co-infection cases counted once for each virus detected.

SARS-CoV-2 Genomic Surveillance

The current sequencing strategy

The National Reference Laboratory for Acute Respiratory Infections at LNS receives SARS-CoV-2 positive samples (nasopharyngeal or oropharyngeal swabs analysed by RT-PCR) from the national network of laboratories and proceeds as follows:

1. Sequencing a representative sample of specimens.
2. Sequencing specimens from target groups (i.e. hospital cases and post-vaccination cases).
3. Sequencing specimens from clusters with high transmission.

The representative sample of specimens is a systematic selection from all SARS-CoV-2 positive cases registered in Luxembourg to detect emerging variants and early increases in their incidence and transmission within the community in Luxembourg. This sample is selected according to the ECDC guidelines.

A screening by targeted PCR tests is also carried out when a new variant emerges in order to enable earlier evaluation of its spread in the population.

SARS-CoV-2 lineages have been assigned based on Rambaut et al. using the Phylogenetic Assignment of Named Global Outbreak LINEages (pangolin) software (4.1.3, pango-data 1.15.1, mode UShER). In addition to that, WHO and Nextstrain nomenclatures are also used to enable easier visualization of links between any evolving variants and their ancestor.

Sequencing activity



Figure 3. Flowchart of specimens collected during week 41/2022

In week 41, 2855 new cases were registered in Luxembourg; hence, the minimum sample size required to detect emerging variants at a 2.5% incidence is estimated to be 496 specimens (17.4%).

As shown in Figure 3, the microbial genomics unit at the LNS sequenced 645 specimens from the week of study, including 564 national ones. The weekly sequencing coverage remains at 19.8% (out of 2855 cases registered in Luxembourg; see coverage trend in Figure 4), which reaches the recommended sample size.

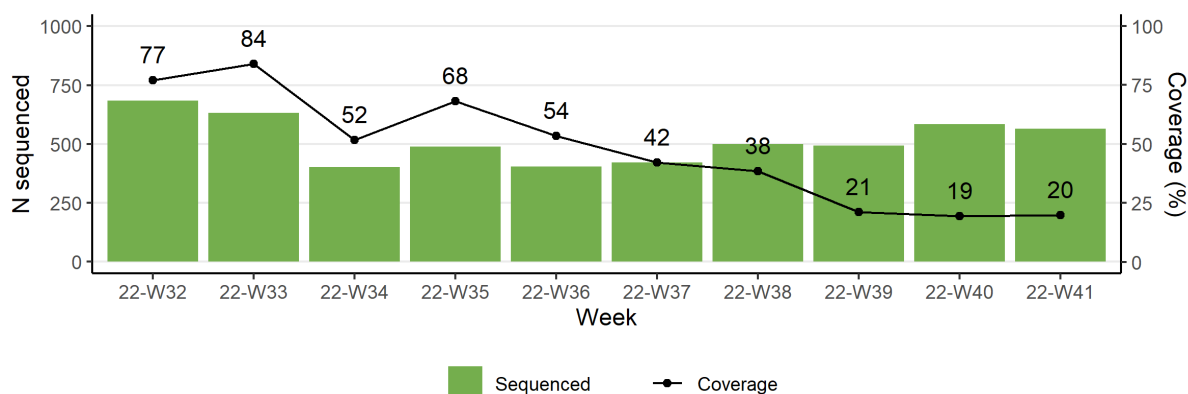


Figure 4. Number of specimens sequenced and national coverage based on weekly number of positive cases in Luxembourg. The coverage from the last two weeks is not consolidated yet.

Circulating lineages detection

The distribution of successfully assigned lineages within the national selection is shown in Figure 6, and it is further detailed in Table 4 (last two weeks). A summary of the VOCs assigned among all specimens sequenced (including non-residents) during the last two weeks and since the beginning of the sequencing activity is shown in Table 5.

The Omicron variant remains the main one detected within the representative sample, the most frequent subvariant being Omicron BA.5 (79.2%), followed by Omicron BA.4 (10.1%). The lineages at higher circulation are BF.7, BA.5.2 and BA.5.1. Additionally, recombinant lineages were detected at 0.4%.

Table 4. Distribution of SARS-CoV-2 lineages detected within the representative sample during the last two weeks. Previously reported cases might be updated by retrospective analysis.

Lineage*	Previous week		Current week	
	%	CI %	%	CI %
Omicron BA.5	83.6	80.4 - 86.8	79.2	75.7 - 82.8
Omicron BA.4	7.8	5.4 - 10.2	10.1	7.4 - 12.7
Omicron BQ.1	7.2	4.9 - 9.5	9.9	7.3 - 12.5
Others	0.6	0.0 - 1.3	0.4	0.0 - 1.0
Omicron BA.2	0.0	-	0.4	0.0 - 1.0
Omicron BA.2.75	0.8	0.0 - 1.6	0.0	-

CI: Confidence Interval at 95%.

*Sub-lineages BA.2.75 and BQ.1 are counted independently from their parental lineages (BA.2 and BA.5, respectively).

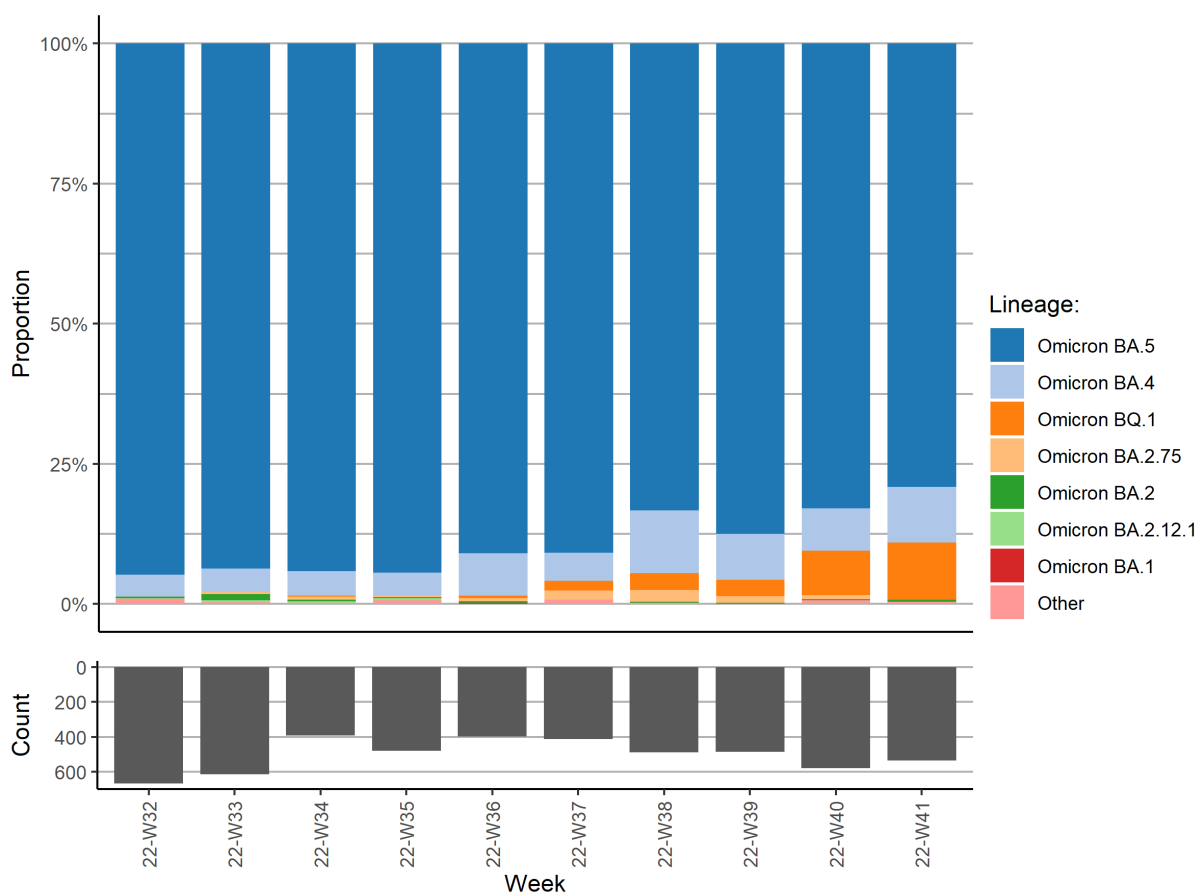


Figure 6. Distribution of lineages within the representative sample during the last 10 weeks.

Table 5. Distribution SARS-CoV-2 variants of concern and lineages under monitoring detected within all samples sequenced since the beginning of the pandemic.

Variant	Previous week		Current week		Cumulative count
	N	%	N	%	
Omicron	646	99.4	625	99.7	30 521
BA.5	541	83.2	497	79.3	11 369
BA.2	1	0.2	2	0.3	10 157
BA.1	0	0.0	0	0.0	7 665
BA.4	47	7.2	61	9.7	889
BA.2.12.1	0	0.0	0	0.0	231
BQ.1	51	7.8	61	9.7	157
BA.2.75	6	0.9	4	0.6	50
Delta	0	0.0	0	0.0	13 672
Others	4	0.6	2	0.3	15 093
Total	650	100.0	627	100.0	59 286

Clinical and epidemiological factors

In this section, the lineage distribution of all specimens sequenced over the last month is assessed by demographics (sex and age group, Figure 7) and sampling setting (community vs. hospital, Table 6).

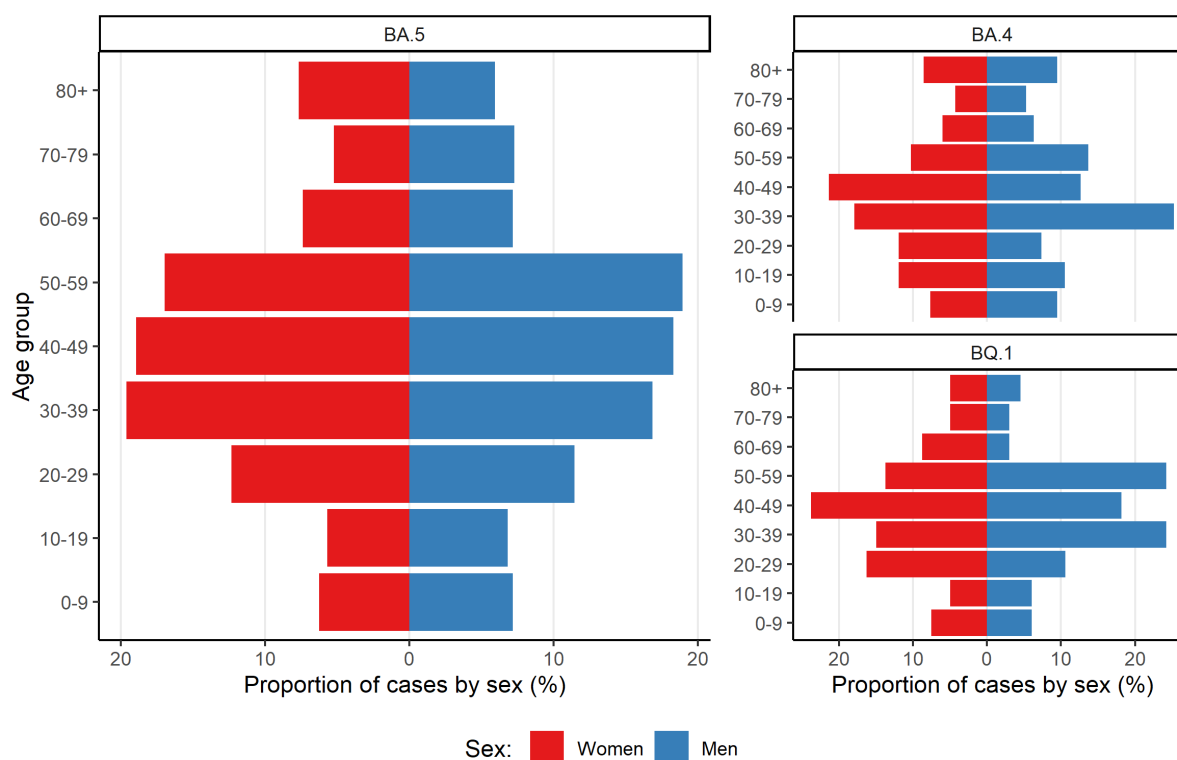


Figure 7. Age group and sex distribution of specimens sequenced over the last 4 weeks, by lineage.

Table 6. Comparison of lineage distribution by sampling setting.

Lineage	Community			Hospital		
	Women	Men	Total	Women	Men	Total
Omicron BA.5	85.0%	85.4%	85.2%	82.5%	83.7%	83.0%
Omicron BA.4	9.1%	8.7%	8.9%	9.8%	9.6%	9.7%
Omicron BQ.1	5.9%	6.0%	5.9%	7.7%	6.7%	7.3%
Total	100.0%	100.0%	100.0%	100.0%	100.0%	100.0%

Mutation surveillance

In addition to the surveillance of SARS-CoV-2 variants, the LNS monitors the occurrence of SARS-CoV-2 mutations, as their early detection might be key to foresee changes in the epidemic evolution. The LNS is currently monitoring mutations to the spike protein, following ECDC guidance, and comparing their prevalence to that observed in Europe (according to GISAID).

Among the specimens collected over the last four weeks, we detected a higher circulation of the following mutations in Luxembourg (compared to Europe):

Table 7. Mutations detected at a higher proportion in Luxembourg

Lineage	Mutation	Gene	% in LU	% in EU	Ratio
BA.4	V3G	S	60.19	14.9	4.03
BA.5	R346T	S	25.96	22.9	1.14
BA.4	R346T	S	89.22	80.1	1.11

LU: Luxembourg; EU: Europe

References

Centers for Disease Control and Prevention. SARS-CoV-2 Variant Classifications and Definitions. Retrieved 24 October 2022, from <https://www.cdc.gov/coronavirus/2019-ncov/variants/variant-info.html>

Data Science for Social Good Portugal. covid19pt-data repository. Retrieved 24 October 2022, from <https://github.com/dssg-pt/covid19pt-data>

European Centre for Disease Prevention and Control. Guidance for representative and targeted genomic SARS-CoV-2 monitoring – 3 May 2021. ECDC : Stockholm ; 2021

European Centre for Disease Prevention and Control. SARS-CoV-2 variants of concern. Retrieved 24 October 2022, from <https://www.ecdc.europa.eu/en/covid-19/variants-concern>

Genomic sequencing of SARS-CoV-2: a guide to implementation for maximum impact on public health. Geneva: World Health Organization; 2021.

GISAID. EpiCoV – Pandemic coronavirus causing COVID-19. Retrieved 5 mai 2022, from <https://www.gisaid.org>

GitHub - cov-lineages/pangolin: Software package for assigning SARS-CoV-2 genome sequences to global lineages. (2021). Retrieved 24 October 2022, from <https://github.com/cov-lineages/pangolin>

Hadfield J., Megill C., Bell S., Huddleston J., Potter B., Callender C. et al. (2018). Nextstrain: real-time tracking of pathogen evolution. *Bioinformatics*, 34(23), 4121-4123. doi: 10.1093/bioinformatics/bty407

Instituto Nacional de Saúde Doutor Ricardo Jorge. Diversidade genética do novo coronavírus SARS-CoV-2 (COVID-19) em Portugal. Retrieved 24 October 2022, from <https://insaflu.insa.pt/covid19/>

Rambaut A., Holmes E., O’Toole Á., Hill V., McCrone J., Ruis C. et al. (2020). A dynamic nomenclature proposal for SARS-CoV-2 lineages to assist genomic epidemiology. *Nature Microbiology*, 5(11), 1403-1407. doi: 10.1038/s41564-020-0770-5

Robert Koch Institut. Aktueller Lage-/Situationsbericht des RKI zu COVID-19. Retrieved 24 October 2022, from https://www.rki.de/DE/Content/InfAZ/N/Neuartiges_Coronavirus/Situationsberichte/Gesamt.html;jsessionid=69BC18053F9591C56EB148E463103DB7.internet101

Santé publique France. Coronavirus : chiffres clés et évolution de la COVID-19 en France et dans le Monde. Retrieved 24 October 2022, from <https://www.santepubliquefrance.fr/dossiers/coronavirus-covid-19/coronavirus-chiffres-cles-et-evolution-de-la-covid-19-en-france-et-dans-le-monde>

Sciensano. COVID-19 – Bulletin épidémiologique hebdomadaire. Retrieved 24 October 2022, from <https://covid-19.sciensano.be/fr/covid-19-situation-epidemiologique>

The Luxembourgish data platform. COVID-19: Rapports hebdomadaires. Retrieved 24 October 2022, from <https://data.public.lu/en/datasets/covid-19-rapports-hebdomadaires/>